



E
X
P
L
O
R
E

THE
MAMMOTH SITE
JUNIOR SCIENTIST
AWARD BOOK



CONTENTS

EARNING YOUR BADGE! WHEN YOU FINISH YOUR ACTIVITIES GO BACK TO THE GIFT SHOP AND SHOW YOUR WORK TO AN EMPLOYEE TO RECEIVE YOUR BADGE AND CERTIFICATE!

01

MURRAY'S BONE SEARCH

02

I SPY MAMMOTH EDITION

03

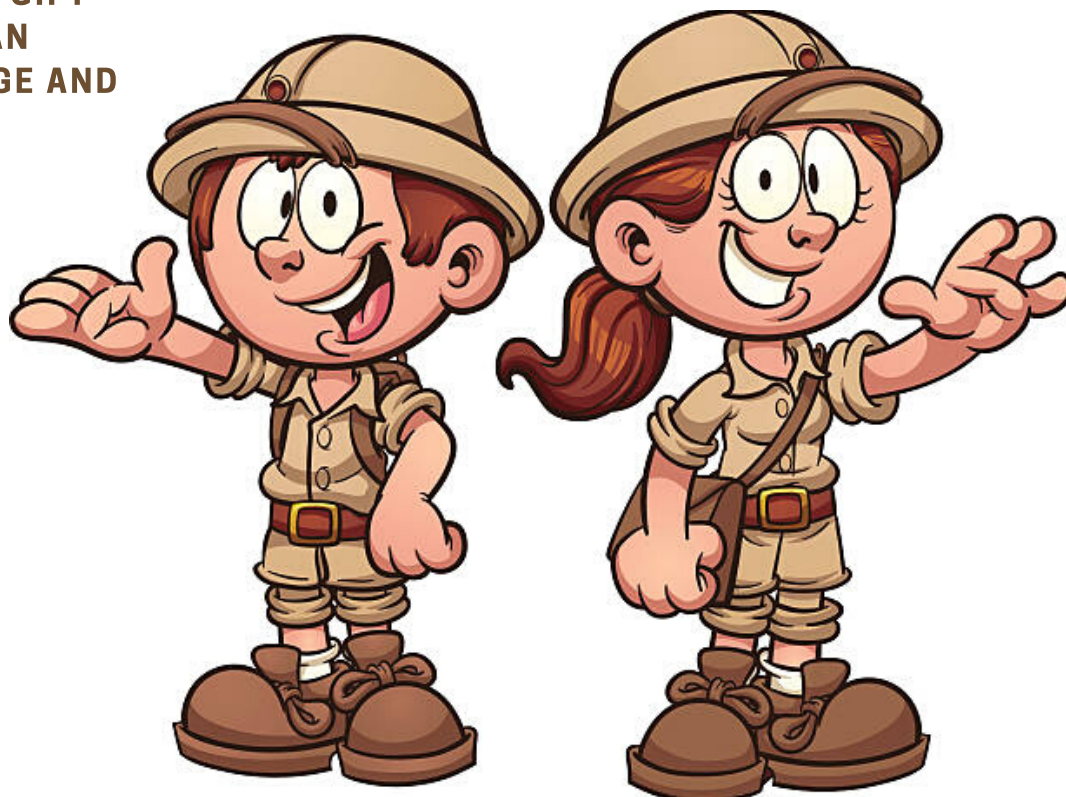
WHAT'S THIS FOR?

04

MAMMOTH Q & A

05

BONES, BONES, BONES



Welcome to The Mammoth Site!

AGES 5-8 COMPLETE 3 ACTIVITIES OF YOUR CHOICE

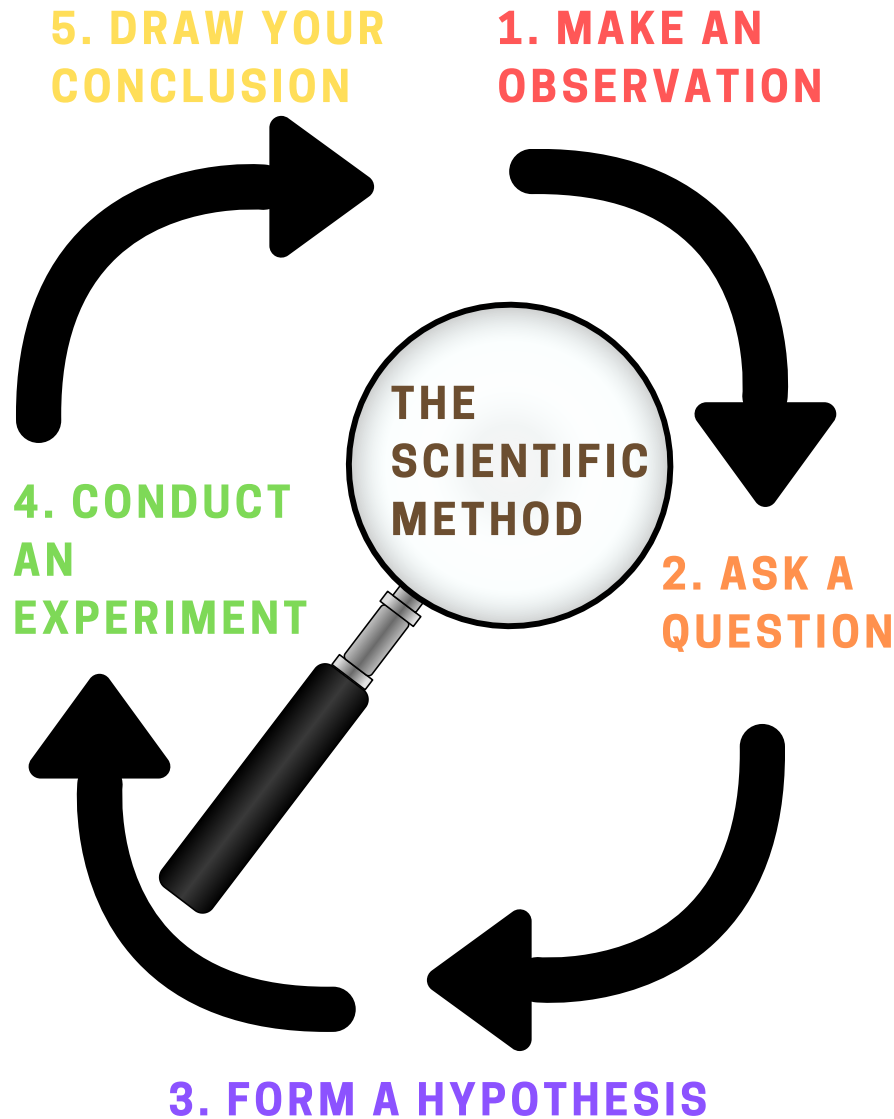
AGES 9 & UP COMPLETE ALL 5 ACTIVITIES

WHAT MAKES A GOOD PALEONTOLOGIST?

**A GOOD PALEONTOLOGIST
STUDIES THE FOSSILS**

**A GOOD PALEONTOLOGIST
*PRACTICES THE SCIENTIFIC
METHOD***

**A GOOD PALEONTOLOGIST
*KEEPS A CLEAN DIG SITE***



MURRAY'S BONE SEARCH



Draw at least 5 bones
you see around The
Mammoth Site! If you
can try to label what
bone it is, you may
need help from an
adult!

Q & A

AFTER YOU GO ON TOUR OF THE BONEBED,
ANSWER 4 QUESTIONS! ASK AN ADULT FOR
HELP IF YOU NEED IT!



- 01** WHAT MAMMOTH WAS THE BIGGEST? COLUMBIAN OR WOOLLY MAMMOTH?
- 02** DID MAMMOTHS EAT MEAT OR PLANTS? HOW DO WE KNOW THAT?
- 03** HOW OLD ARE BONES AT THE MAMMOTH SITE?
- 04** WHAT KIND OF BEAR WAS FOUND AT THE MAMMOTH SITE?

WHAT'S THIS FOR?

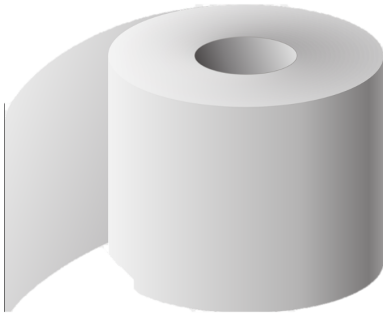
DRAW A LINE FROM A TOOL TO ITS DESCRIPTION. DID YOU KNOW SCIENTISTS USE EACH OF THESE TOOLS AT THE MAMMOTH SITE?



Trowel



Shovel



Toilet Paper

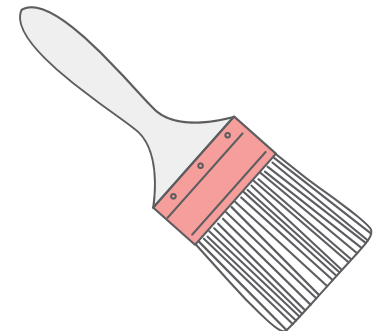
1. Sweep away sediment from Mammoth Bones
2. Wrap up Mammoth bone before plaster
3. Remove sediment around a bone
4. Keep notes to describe bones
5. Carefully pick grains of sediment from a bone
6. Dig large holes, quickly



Dental Pick



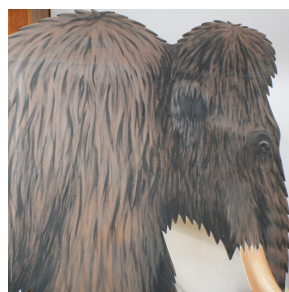
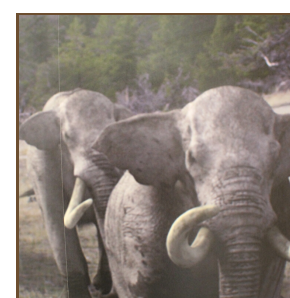
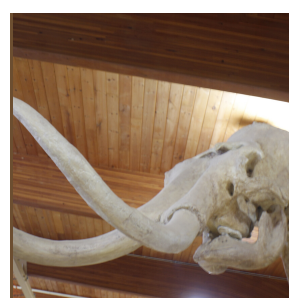
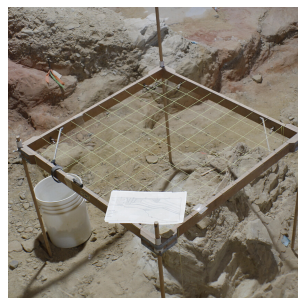
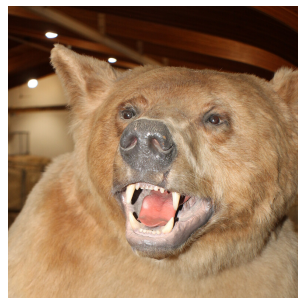
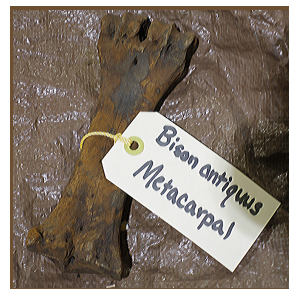
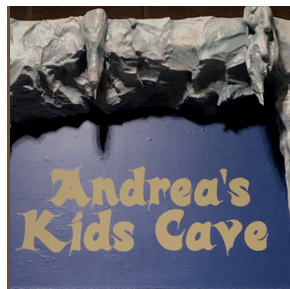
Notebook



Brush

SPY

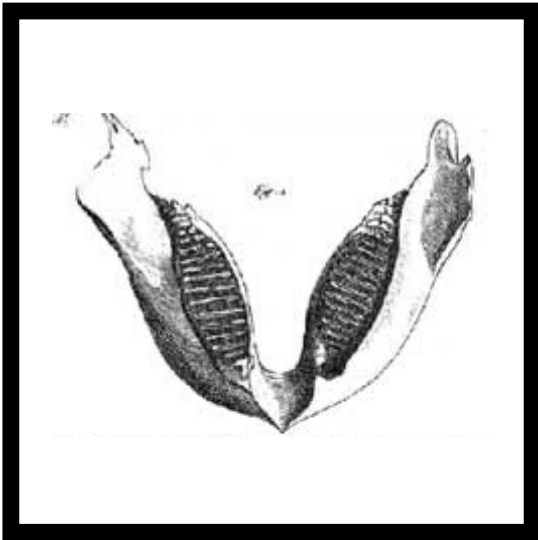
WHAT DO YOU SEE WHILE YOU EXPLORE THE MAMMOTH SITE? WHEN YOU FIND THE PICTURE, DRAW AN X OVER IT. FIND FOUR IN A ROW ACROSS, UP OR DOWN. OR FOUR DIAGONAL AND WIN BINGO!



BONES, BONES, BONES

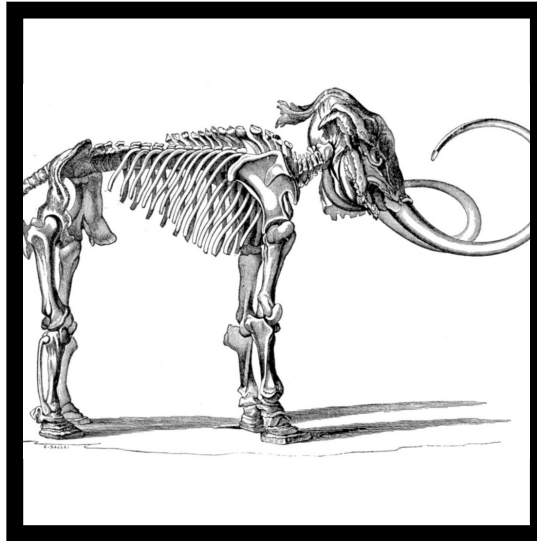
LOOK AT THE BONES IN THE RED CIRCLE ON THE BONEBED MAP ON THE NEXT PAGE. CAN YOU IDENTIFY IF IT IS A MANDIBLE, WHOLE SKELETON, OR A SKULL?

MANDIBLE



1

SKELETON



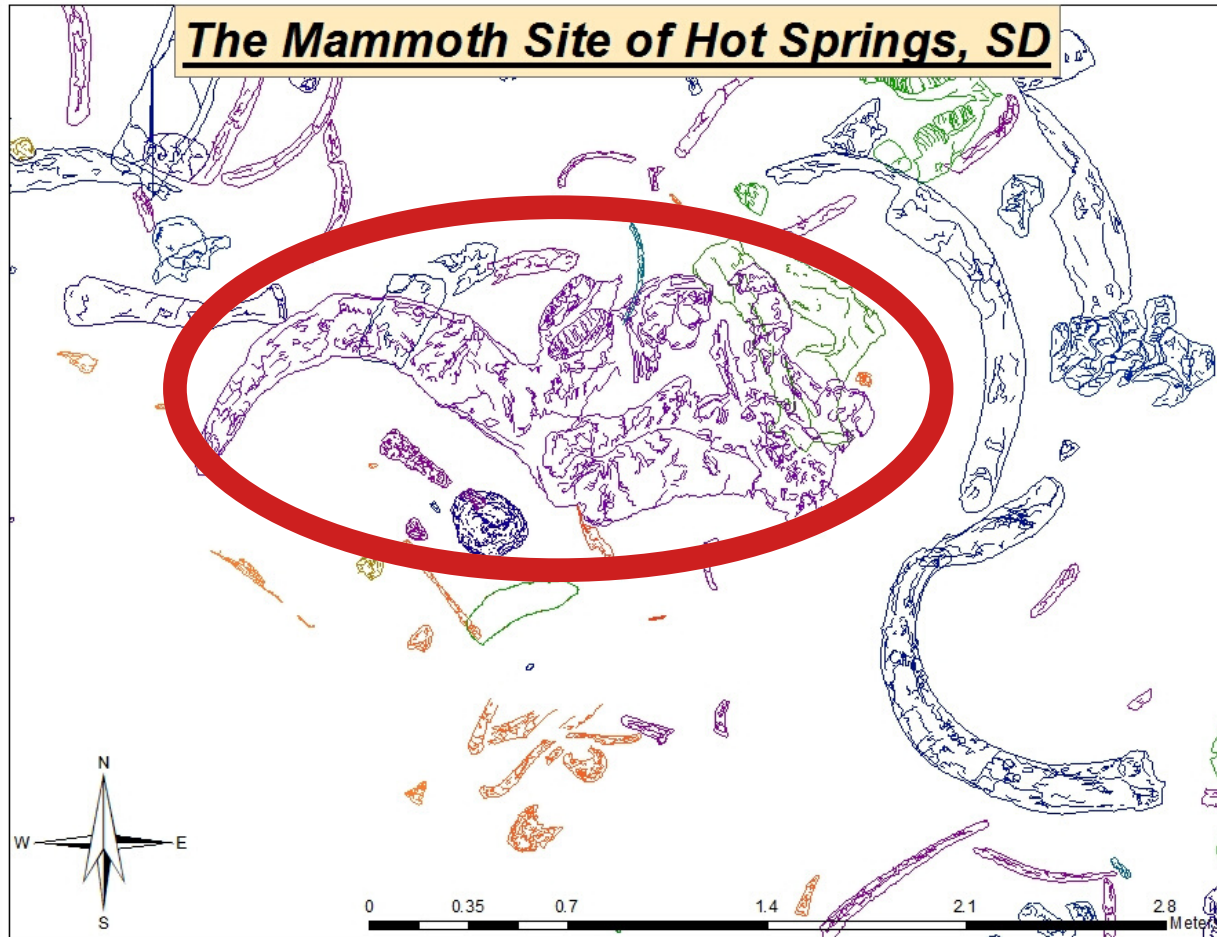
2

SKULL



3

BONEBED MAP



A _____



The Mammoth Site of Hot Springs, South Dakota takes visitors back over 140,000 years into the Ice Age. Named the 'Best Museum in South Dakota' by USA Today, The Mammoth Site offers a 30 minute guided tour. Walk by the edges of the sinkhole where Columbian and woolly mammoths, camels, wolves and giant short-faced bears became trapped, leaving an ancient treasure trove of fossil remains. This active working excavation site features the fossils of over 60 mammoths! Apart from an active excavation and research, The Mammoth Site offers a wide variety of educational programming for all ages. Check out our website for more details:

www.mammothsite.org



"This institution is an equal opportunity provider"